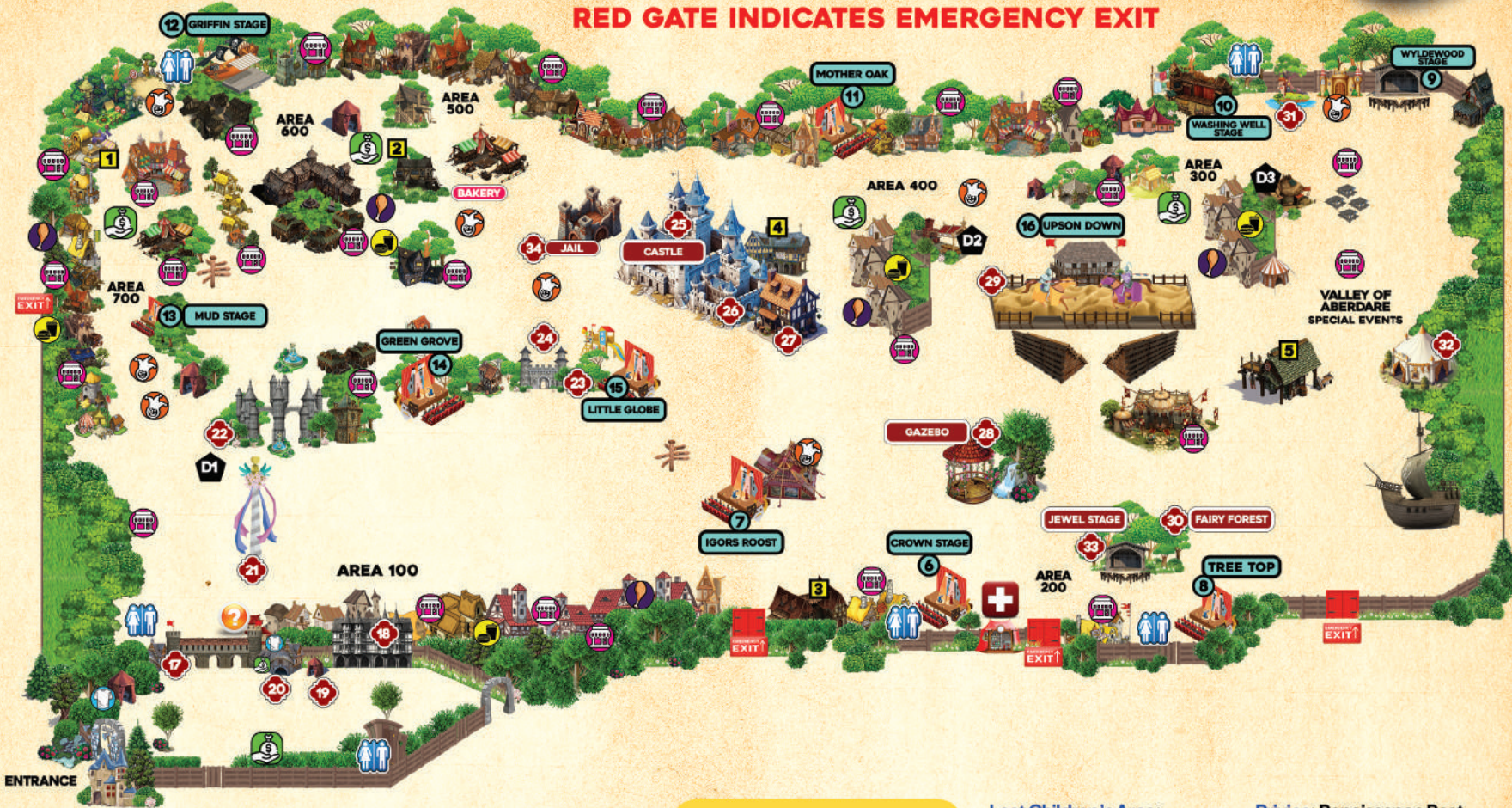


## RED GATE INDICATES EMERGENCY EXIT



### PUBS

- 1 ... Red Lion Inn
- 2 ... Evan's Landing
- 3 ... Throne Of Swords
- 4 ... Guinness
- 5 ... Battle Axe Pub

### STAGES

- 6 ... Crown Stage
- 7 ... Igor's Roost
- 8 ... Tree Top
- 9 ... Wyldewood
- 10... Washing Well
- 11 ... Mother Oak
- 12... Griffin Stage
- 13... Mud Stage
- 14... Green Grove
- 15... Little Globe
- 16... Upson Down

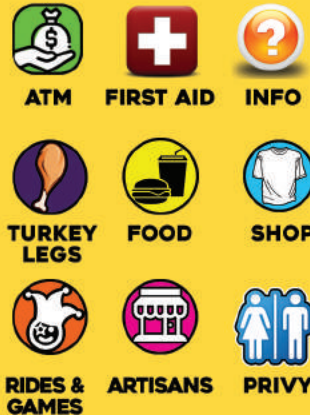
### IMPORTANT LOCATIONS

- 17 ... Front Gate
- 18 ... Box Office
- 19 ... Dog Registration
- 20... Festival Gift Shop
- 21 ... Maypole
- 22... Arched Wall
- 23 ... Children's Realm
- 24 ... Ice Cream Shop
- 25 ... Blackstone Castle
- 26... Crystal Palace
- 27 ... Bloody Mary Bar
- 28... Queen's Gazebo
- 29... Joust Field
- 30... Fairy Forest
- 31 ... Mermaid Cove
- 32 ... Wine Tent
- 33 ... Jewel Stage
- 34... Jail

### RESTAURANTS

- D1 ... Dragon's Den
- D2 ... Dragon's Lair
- D3 ... Dragon's Pit

### LEGEND



#### Lost Children's Area:

Immediately inform Sheriff, Festival Security and/or Festival staff of any lost persons.

#### ATM • Cash Transactions:

Express Teller cash machines are in several locations. Please refer to the map above.

#### First Aid:

Located on the east side of the Village in the Market Place area near the water wheel. Medical staff available at all times.

#### Information Booth:

Located in the main Gift Shop next to the Front Gate.

**Privies:** Renaissance Rest Rooms are located throughout the Village.

**Film Rights:** All film rights are reserved. Commercial use of photos, videos or audio recordings made at the festival without written permission from the Marketing Department is strictly prohibited.

**Safety Services:** The Queen's Guards are available in any emergency. They wear yellow tunics with a red cross and carry flagged poles. Individuals with disabilities should direct questions to Safety Services.

Scan the QR CODE below or text michrenfest to 41372 to receive on-site emergency notifications, event updates, ticket specials & coupons.



Important Notice: This guide map serves as a reference for your convenience. Please be aware that actual locations might slightly differ.